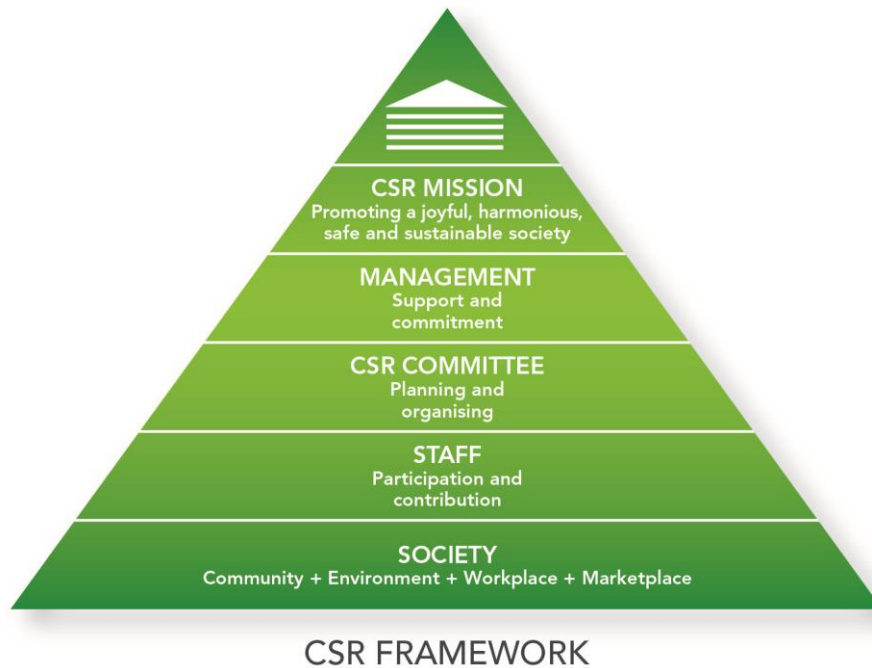


## Sustainability Policy



### CORE VALUE

*“to promote a joyful, harmonious, safe and sustainable community, environment, workplace and marketplace through the encouragement of volunteerism of contribution from all levels within the Organisation”*

### SUSTAINABILITY POLICY

It is our commitment to incorporate sustainability practices to bring a greater value to our community, environment, workplace and marketplace through our Corporate Social Responsibility (“CSR”) Framework.

We strive to promote the CSR values through the encouragement of volunteerism of contribution and participation in CSR activities from thousands of staff across the regions within our Group. We aim to build the value of sustainability practices into the working culture along with our staff.

Several CSR committees at various branches and subsidiaries within the Group are established to assist the Group in planning and organising events and activities that enable the Group to share its results with the society – to be driven by the motto – “from the society, for the society”.

The Management of the Group is committed to support and promote CSR values through a systematic resources allocation mechanism for funding and promoting CSR activities.